



HALSTON DESIGNER SERIES

Square Glass Refrigerated Display Case



PRODUCT SPECIFICATION

Model	Capacity (cu.ft)	Shelves	Cabinet Dimensions (Inches / mm)			HP	Voltage	Amps	Cord Length (Ft)	Net Weight (lbs. / kg)
			L	D	H					
UNI-RC-4F	13.7	2	47.2" 1200	27" 680	47.2" 1200	1/3	110V/60Hz	4.40	6	473 215
UNI-RC-5F	17.6	2	59" 1500	27" 680	47.2" 1200	1/3	110V/60Hz	5.70	6	518 235
UNI-RC-6F	21.5	2	70.8" 1800	27" 680	47.2" 1200	2/3	110V/60Hz	6.20	6	590 268



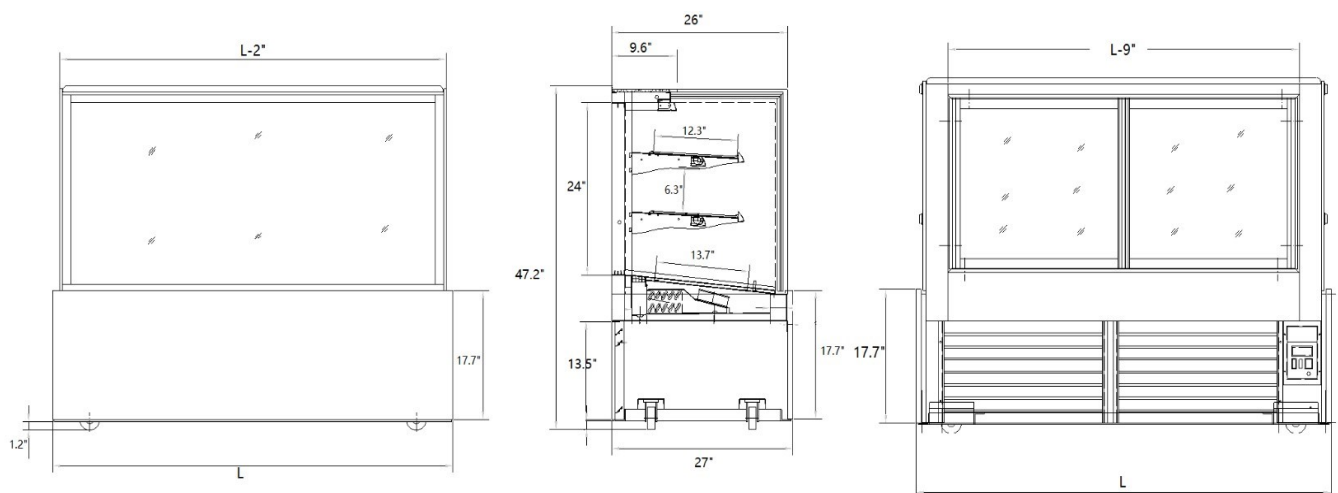
In Accordance with
AHRI Std 1200

DOE 2017
Energy Efficiency
Compliant

STANDARD FEATURES •

- *Refrigeration system is optimized to function between 36~ 41 °F*
- *Exterior tempered glass finish*
- *With caster and adjustable legs*
- *Movable shelves and shelf brackets*
- *Fan cooling refrigeration system*
- *Sliding out condensing unit*
- *LED light inside top and each shelf*
- *High quality digital temperature controller*
- *Triple glazed safety glass with heater*
- *Automatic defrost system*
- *CFC-Free R-290 Refrigerant*
- *ETL approved (conforms to UL-471&NSF-7)*

Plan view



Direct Phone & Services: (516) 527-3309 . (888) 443-7014. info@unisourcefoodequipment.com . unisourcefoodequipment.com

170 Wilbur Place, Suite 300, Bohemia, New York, 11716