



Follow the Leader™

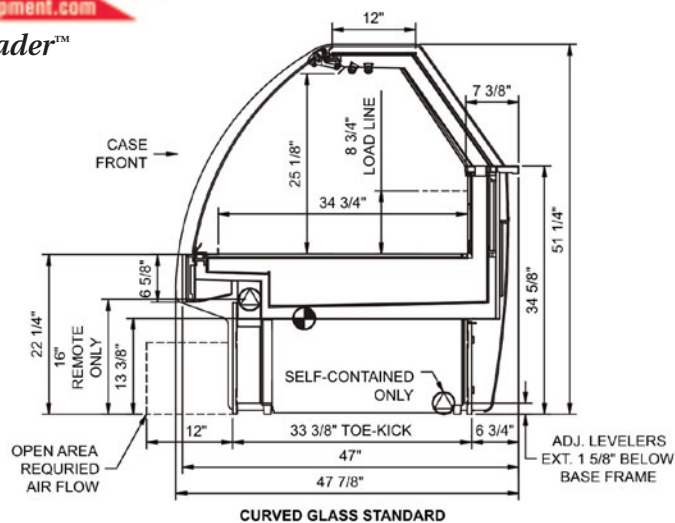
Deli Showcase



FEATURES		STANDARD	OPTIONS
EXTERIOR COLOR	<input type="checkbox"/> Painted		<input type="checkbox"/> Stainless Steel
INTERIOR COLOR	<input type="checkbox"/> Black		<input type="checkbox"/> Stainless Steel <input type="checkbox"/> White
TRIM COLOR	<input type="checkbox"/> Black		<input type="checkbox"/> Silver
BASE	<input type="checkbox"/> 35"H refrigerated Base		
END PANELS	<input type="checkbox"/> None (specify per line-up)		<input type="checkbox"/> Case to case cutaway end <input type="checkbox"/> Case to case full end <input type="checkbox"/> Cutaway w/ glass <input type="checkbox"/> Full with mirror
FRONT GLASS	<input type="checkbox"/> Curved single pane, lift-up		<input type="checkbox"/> Flat angled single pane, lift-up <input type="checkbox"/> Front glass lock
REAR DOORS UPPER	<input type="checkbox"/> Removable angled clear acrylic upper rear sliding doors		<input type="checkbox"/> Night curtain, retractable, non-locking <input type="checkbox"/> Open <input type="checkbox"/> Rear door lock
REAR LEDGE	<input type="checkbox"/> Black poly		<input type="checkbox"/> Corian solid surface <input type="checkbox"/> Quartz <input type="checkbox"/> Stainless steel <input type="checkbox"/> White poly
LIGHTING UPPER	<input type="checkbox"/> Double row T-8 top light(s)		<input type="checkbox"/> LED top light(s)
ELECTRICAL CONNECT	<input type="checkbox"/> Leads		<input type="checkbox"/> 6' Straight Blade Power Cord (Self-Cont.)
REFRIGERATION	<input type="checkbox"/> Remote DX Refrigeration		<input type="checkbox"/> Breeze™ w/EnergyWise s/c refrigeration <input type="checkbox"/> Clean Sweep® condenser coil cleaner <input type="checkbox"/> Coated evaporator coil <input type="checkbox"/> Remote Glycol refrigeration
MISCELLANEOUS			<input type="checkbox"/> 1" bumper on upper front panel <input type="checkbox"/> 2" bumper on upper front panel <input type="checkbox"/> 2" H Full depth display riser(s) <input type="checkbox"/> Price tag moulding <input type="checkbox"/> Stainless steel condiment rail system <input type="checkbox"/> Top mount scale stand w/receptacle

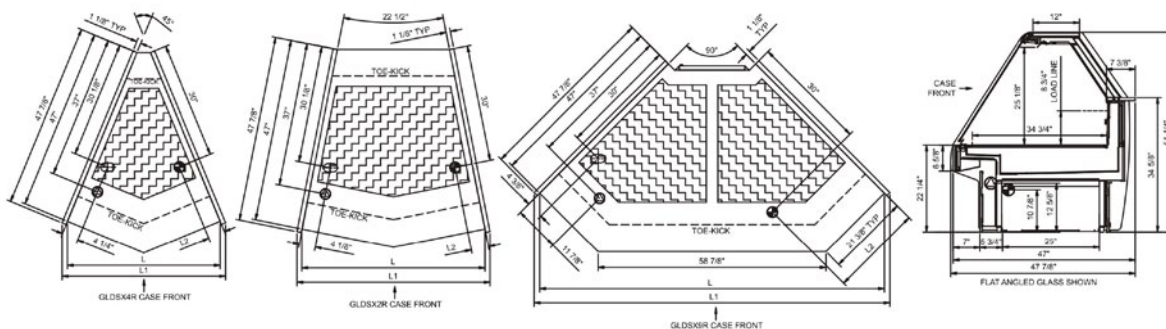
STRAIGHT

Model	L x D x H Lengths do not include 1" end panels)
GLDS4R	48-3/4"L x 47-7/8"D x 51-1/4"H
GLDS5R	60-5/8"L x 47-7/8"D x 51-1/4"H
GLDS6R	73-1/8"L x 47-7/8"D x 51-1/4"H
GLDS8R	97-1/2"L x 47-7/8"D x 51-1/4"H
GLDS10R	121-1/8"L x 47-7/8"D x 51-1/4"H
GLDS12R	146-1/4"L x 47-7/8"D x 51-1/4"H



CONVEX / OUTSIDE MITERED WEDGE

Model	L x D x H Lengths do not include 1" end panels)
GLDSX4R	39-1/2"L x 47-7/8"D x 51-1/4"H
GLDSX2R	47-3/8"L x 47-7/8"D x 51-1/4"H
GLDSX9R	89-1/8"L x 47-7/8"D x 51-1/4"H



CONVEX / INSIDE MITERED WEDGE

Model	L x D x H Lengths do not include 1" end panels)
GLDSN2R	40-1/2"L x 47-7/8"D x 51-1/4"H
GLDSN4R	56-7/8"L x 47-7/8"D x 51-1/4"H
GLDSN9R	105"L x 47-7/8"D x 51-1/4"H

INTENDED ENVIRONMENT:

Designed to operate in ambient conditions of 75°F with 55% relative humidity.

IMPORTANT NOTES:

1) Units must be shimmed during installation to ensure the unit is level and plumb.

