



HALSTON DESIGNER SERIES

Frameless refrigerated display case



PRODUCT SPECIFICATION

Model	Doors	Capacity (cu.ft)	Shelves	Cabinet Dimensions (Inches / mm)			HP	Voltage	Amps	Cord Length (ft.)	Net Weight (lbs. / kg)
				L	D	H					
UNI-RC-4FN	2	13.7	2	47.2" 1200	27" 680	47.2" 1200	1/3	110V/60Hz	4.40	6	473 215
UNI-RC-5FN	2	17.6	2	59" 1500	27" 680	47.2" 1200	1/3		5.70		518 235
UNI-RC-6FN	2	21.5	2	70.8" 1800	27" 680	47.2" 1200	2/3		6.20		590 268



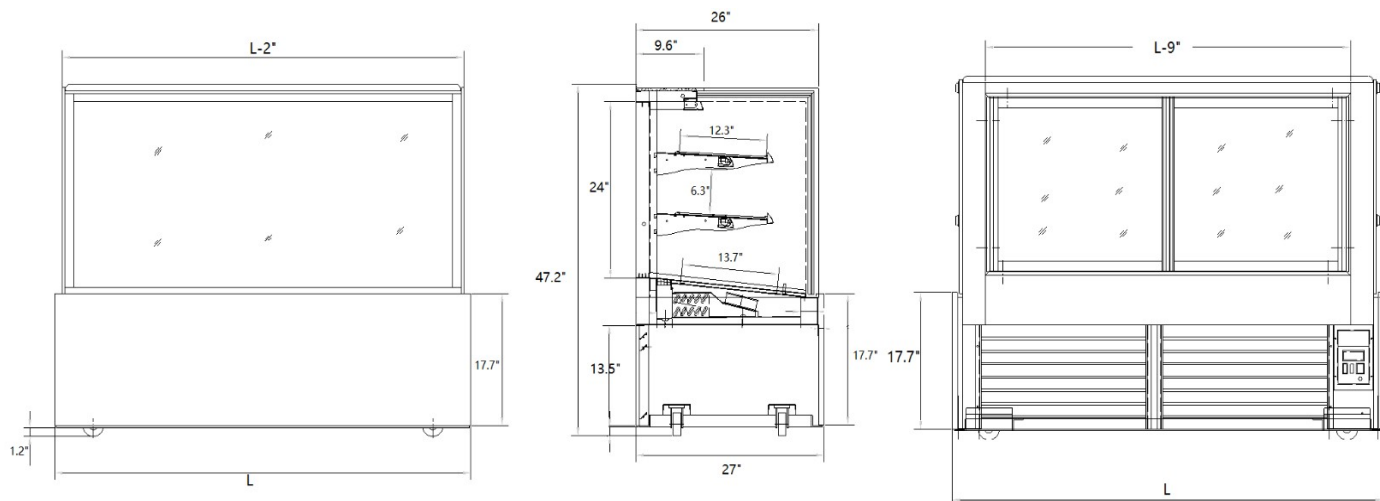
In Accordance with
AHRI Std 1200

DOE 2017
Energy Efficiency
Compliant

STANDARD FEATURES

- Heavy duty construction includes stainless steel interior and white powder coated steel for exterior
- *Refrigeration system is optimized to function between 36 °F ~ 40 °F*
- *High quality digital temperature controller*
- *With caster and adjustable legs*
- *Sliding out condensing unit*
- *LED light inside top and under each shelf*
- *Double glazed safety glass with heated film inside*
- *Automatic defrost system*
- *R290 Refrigerant, O-zone friendly*
- *ETL approved (conforms to UL-471&NSF-7)*
- *DOE 2017, Energy efficient compliant*

Plan view



Direct Phone & Services: (516) 527-3309 . (888) 443-7014. info@unisourcefoodequipment.com . unisourcefoodequipment.com

170 Wilbur Place, Suite 300, Bohemia, New York, 11716