



HALSTON DESIGNER SERIES

High-top refrigerated display case



PRODUCT SPECIFICATION

Model	Doors	Capacity (cu.ft)	Shelves	Cabinet Dimensions (Inches / mm)			HP	Voltage	Amps	Cord Length (ft.)	Net Weight (lbs. / kg)
				L	D	H					
UNI-DR-4F	2	12.2	2	47.2" 1200	29.5" 750	43.3" 1100	1/3	110V/60Hz	4.20	6	408 185
UNI-DR-5F	2	13.5	2	59" 1500	29.5" 750	43.3" 1100	1/3		5.50		462 210
UNI-DR-6F	2	15.0	2	70.8" 1800	29.5" 750	43.3" 1100	1/2		6.80		550 250
UNI-DR-8F	2	18.5	2	95" 2400	29.5" 750	43.3" 1100	1/2		7.50		630 286



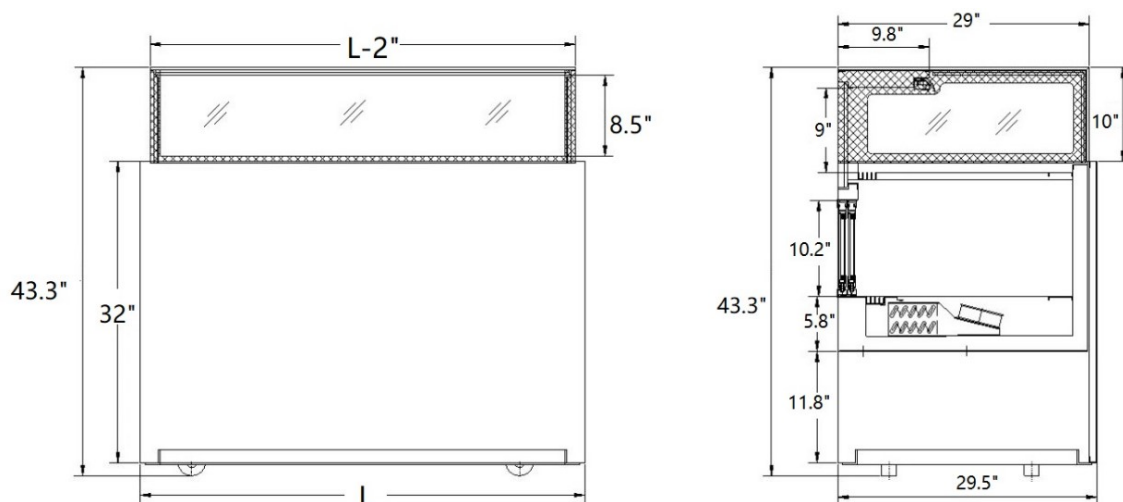
In Accordance with
AHRI Std 1200

DOE 2017
Energy Efficiency
Compliant

STANDARD FEATURES

- High-top refrigerated display case
- *High quality digital temperature controller*
- *With caster and adjustable legs*
- *Fan cooling refrigeration system is optimized to function between 36~41 °F*
- *Sliding out condensing unit*
- *LED light inside top*
- *Double glazed safety glass with heated film inside*
- *Automatic defrost system*
- *Bottom refrigerated storage space (optional)*
- *R290 Refrigerant, O-zone friendly*
- *ETL approved (conforms to UL-471&NSF-7)*
- *DOE 2017, Energy efficient compliant*

Plan view



Direct Phone & Services: (516) 527-3309 . (888) 443-7014. info@unisourcefoodequipment.com . unisourcefoodequipment.com

170 Wilbur Place, Suite 300, Bohemia, New York, 11716