

Classique III Bread/Basket Wall Merchandiser 4', 57" & 75" L



NOTE: All temperature controlled cases are designed to operate in an environment of 75°F ambient temperature and 55% humidity level. Rear of unit needs to be 6" from a wall or obstruction.

Product specifications and design are subject to change without notice. Such changes do not entitle the buyer to corresponding changes, improvements, additions or replacement for equipment previously sold or shipped.

MODEL NUMBER	DIMENSIONS (L x D x H)
C3B/W48448-A	49-1/2" x 38-3/8" x 79"
C3B/W48457-A	58-1/2" x 38-3/8" x 79"
C3B/W48475-A	76-1/2" x 38-3/8" x 79"

Classique III Bread/Basket Wall Merchandiser 4', 57" & 75" L

STANDARD FEATURES

Case Interior

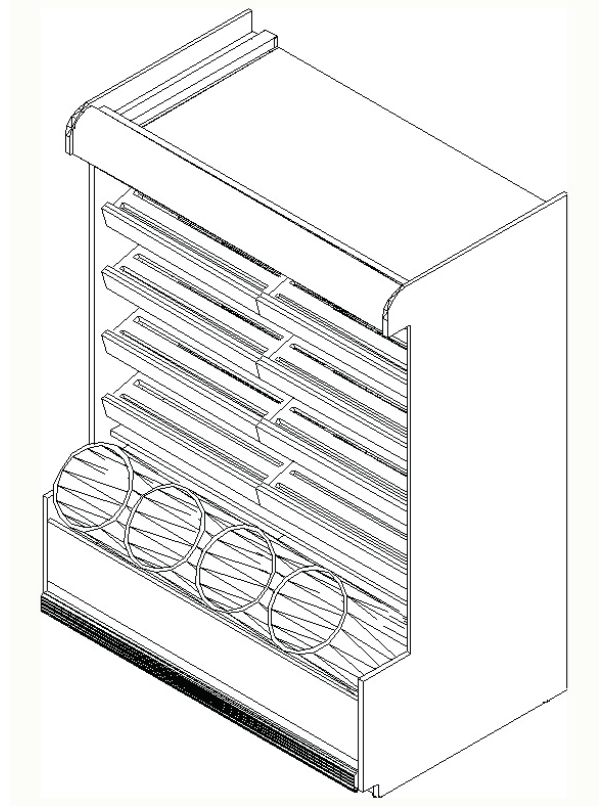
- Slat shelves
- Four lighted merchandising levels adjustable in 1" increments (Can be merchandised with full bakery pans)
- Laminated 26" D display deck
- Four wicker baskets

Electrical

- T-8 lighting with top light and three electrical shelves wired to an electrical ballast

Construction

- 1" and 3" McCue bumper
- Sheet metal base construction
- Powder coated sheet metal back



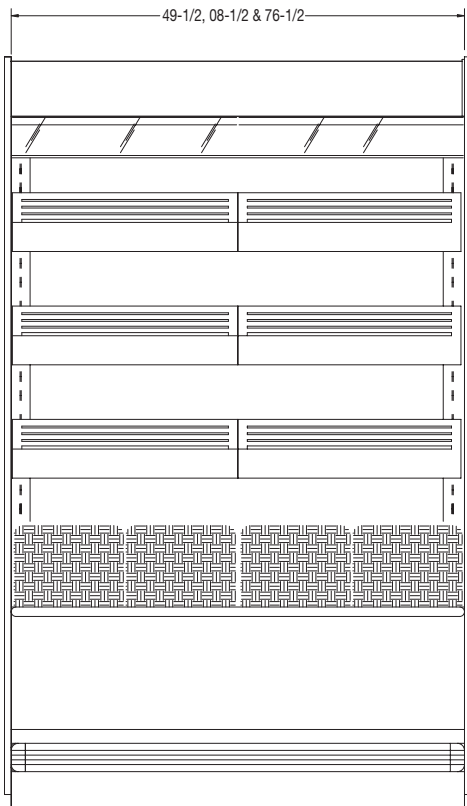
NOTE: All temperature controlled cases are designed to operate in an environment of 75°F ambient temperature and 55% humidity level. Rear of unit needs to be 6" from a wall or obstruction.

Product specifications and design are subject to change without notice. Such changes do not entitle the buyer to corresponding changes, improvements, additions or replacement for equipment previously sold or shipped.

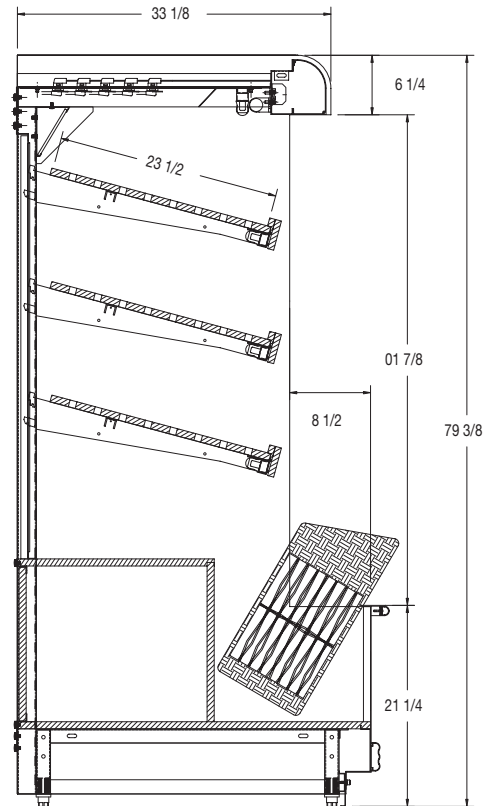
MODEL NUMBER	DIMENSIONS (L x D x H)
C3B/W48448-A	49-1/2" x 38-3/8" x 79"
C3B/W48457-A	58-1/2" x 38-3/8" x 79"
C3B/W48475-A	76-1/2" x 38-3/8" x 79"

Classique III Bread/Basket Wall Merchandiser 4', 57" & 75" L

FRONT VIEW



SIDE VIEW



PRODUCT SPECIFICATION	STANDARD	OPTION(S)
Interior Color	Black or White	
Shelving Quantity	Four (4) slat shelves	
Lower Front Panel Color	Black or White	WilsonArt Standard and Custom Laminates
End Panel Color	Black or White	WilsonArt Standard and Custom Laminates
End Panels	Open end panel	
Bunk Front	Four (4) wicker baskets	
Base Frame	Levelers	
Power Cord	Hardwired	NEMA plug

NOTE: All temperature controlled cases are designed to operate in an environment of 75°F ambient temperature and 55% humidity level. Rear of unit needs to be 6" from a wall or obstruction.

Product specifications and design are subject to change without notice. Such changes do not entitle the buyer to corresponding changes, improvements, additions or replacement for equipment previously sold or shipped.

MODEL NUMBER	DIMENSIONS (L x D x H)
C3B/W48448-A	49-1/2" x 38-3/8" x 79"
C3B/W48457-A	58-1/2" x 38-3/8" x 79"
C3B/W48475-A	76-1/2" x 38-3/8" x 79"

Classique III Bread/Basket Wall Merchandiser 4', 57" & 75" L

FOOTPRINT

CERTIFICATIONS:

NOTE: CSC Worldwide products are certified to conform to NSF standards #2, #4, or #7, and UL standards #65, #197 or #471 through one or more of the following agencies: UL, NSF, ETL. Contact CSC Worldwide for verification or requests for certification.



MODEL	LENGTH	ELECTRICAL INFORMATION			FREIGHT	
		VOLTS	AMPS	NEMA PLUG	SHIP WT.	FRT. CLS.
C3B/W48448-A	49-1/2"	115	.6	5-15P	575	125
C3B/W48457-A	58-1/2"	115	.85	5-15P	600	125
C3B/W48475-A	76-1/2"	115	1.8	5-15P	725	125

NOTE: All temperature controlled cases are designed to operate in an environment of 75°F ambient temperature and 55% humidity level. Rear of unit needs to be 6" from a wall or obstruction.

Product specifications and design are subject to change without notice. Such changes do not entitle the buyer to corresponding changes, improvements, additions or replacement for equipment previously sold or shipped.

MODEL NUMBER	DIMENSIONS (L x D x H)
C3B/W48448-A	49-1/2" x 38-3/8" x 79"
C3B/W48457-A	58-1/2" x 38-3/8" x 79"
C3B/W48475-A	76-1/2" x 38-3/8" x 79"